

March 23, 2010

This document explains interim operating solutions until you are able to update your firmware. Each version of firmware has acceptable instrument activity.

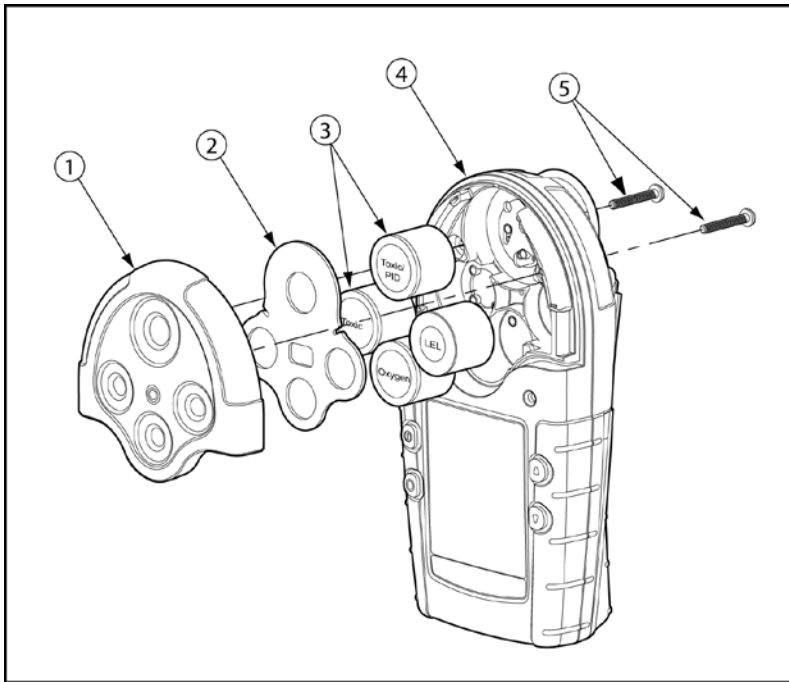
| Instrument Firmware Version | Using Diffusion Mode no remote sampling | Using Diffusion Mode with remote sampling – manual aspirator kit | Using Diffusion Mode with remote sampling – motorized Sampler* | Using Pump Mode |
|------------------------------------|---|--|--|-----------------------------------|
| 28, 16d, or 16c | operate as normal | operate as normal | operate as normal | do NOT use |
| 35, 21i, or 21c | operate as normal | operate as normal | operate as normal | do NOT use |
| 36, 22i, or 22c | use only with 2 or 3 battery bars | use only with 2 or 3 battery bars | use only with 2 or 3 battery bars | use only with 2 or 3 battery bars |
| 37, 23i, or 23c | operate as normal | operate as normal | operate as normal | operate as normal |

If you need to perform remote sampling, refer to this document for alternative sampling options for GasAlertMicro 5 Series/X5 Series using the diffusion cover, the motorized sample pump, or the manual aspirator pump.

- [Installing the Diffusion Cover](#)
- [Using the Sampler](#) (motorized sample pump)*
- [Using the Manual Aspirator Pump](#)

* Motorized sampling option—the Sampler—is cULus, IECEx and ABS certified.

Installing the Diffusion Cover



| Item | Description |
|------|--------------------|
| 1 | Diffusion cover |
| 2 | Sensor filter |
| 3 | Sensors |
| 4 | Detector |
| 5 | Machine screws (2) |

Note

The sensors do not need to be removed when switching to the diffusion cover.

1. Deactivate the detector.
2. Remove the two machine screws on the rear shell and then remove the pump module.

Note

The sensors do not need to be removed when switching to the diffusion cover.

3. Replace the diffusion cover. Ensure a sensor filter is fitted in the diffusion cover.

Note

If you do not have a diffusion cover, contact your distributor or BW Technologies by Honeywell.

4. Re-assemble the detector.
5. Calibrate the detector.

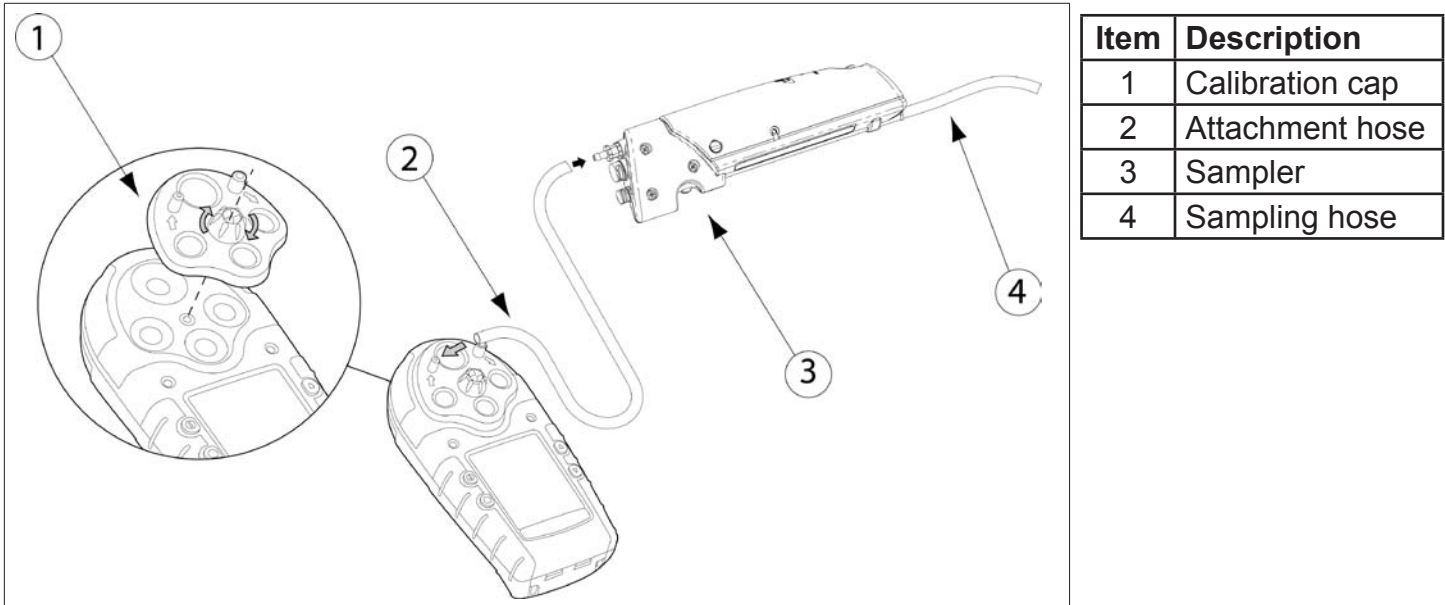
Using the Sampler

The Sampler is a spot sampling device that can be used with most BW single and multiple gas detectors. An internal motorized pump transports potentially hazardous gases from a sample area to the detector.

For more information on using the Sampler, refer to the Sampler User Manual.

Note

Motorized sampling option—the Sampler—is cULus, IECEx and ABS certified.

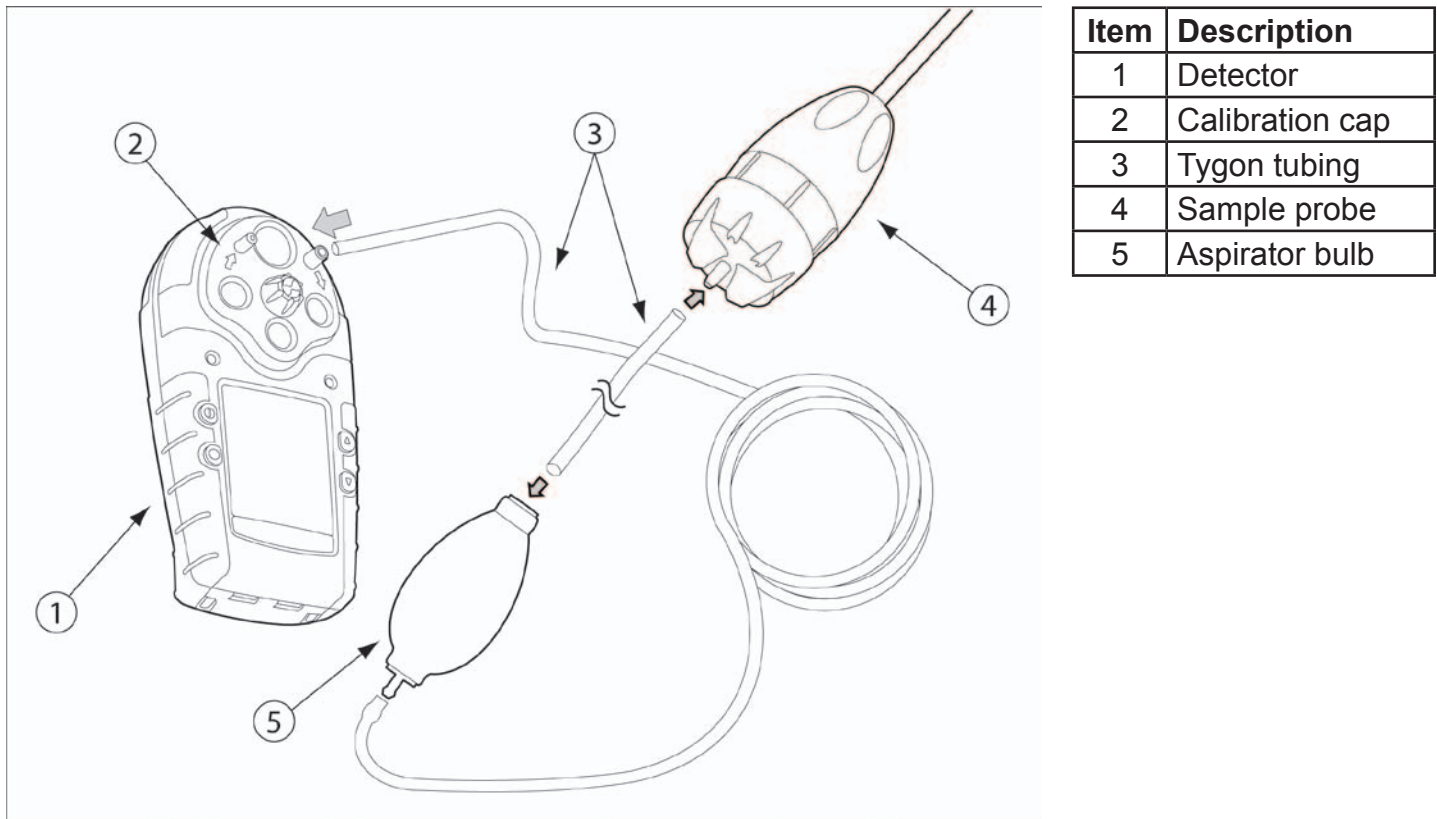


When using the Sampler with the GasAlertMicro 5 Series/X5 Series instruments, ensure the calibration cap is attached.

Using the Manual Aspirator Pump

The manual aspirator is a sampling device that can be used with most BW single and multiple gas detectors. An aspirator bulb transports potentially hazardous gases from a sample area to the detector.

For more information, refer to the Manual Aspirator Pump Instruction Sheet.



To prevent the Teflon lining inside the Tygon tubing from causing blockage when connecting it to the sample probe, the open end of the tubing must be flared. To flare the tubing, gently insert needle nose pliers into an end of the Teflon-lined Tygon tubing. Using a circular motion, flare the end of the hose.

Contacting BW Technologies by Honeywell

United States: 1-888-749-8878

Canada: +1-800-663-4164

Brazil: +55 11 3475 1873

Other countries: +1 403 248 9226

Europe: +44 (0) 1295 700 300

France: +33 (0) 442 98 17 70

Germany: +49 (0) 2137 17 6522

Middle East: +971 4 8871766

China: +86 10 6786 7305

South East Asia: +65 6580 3468

Australia: +613 9464 2770